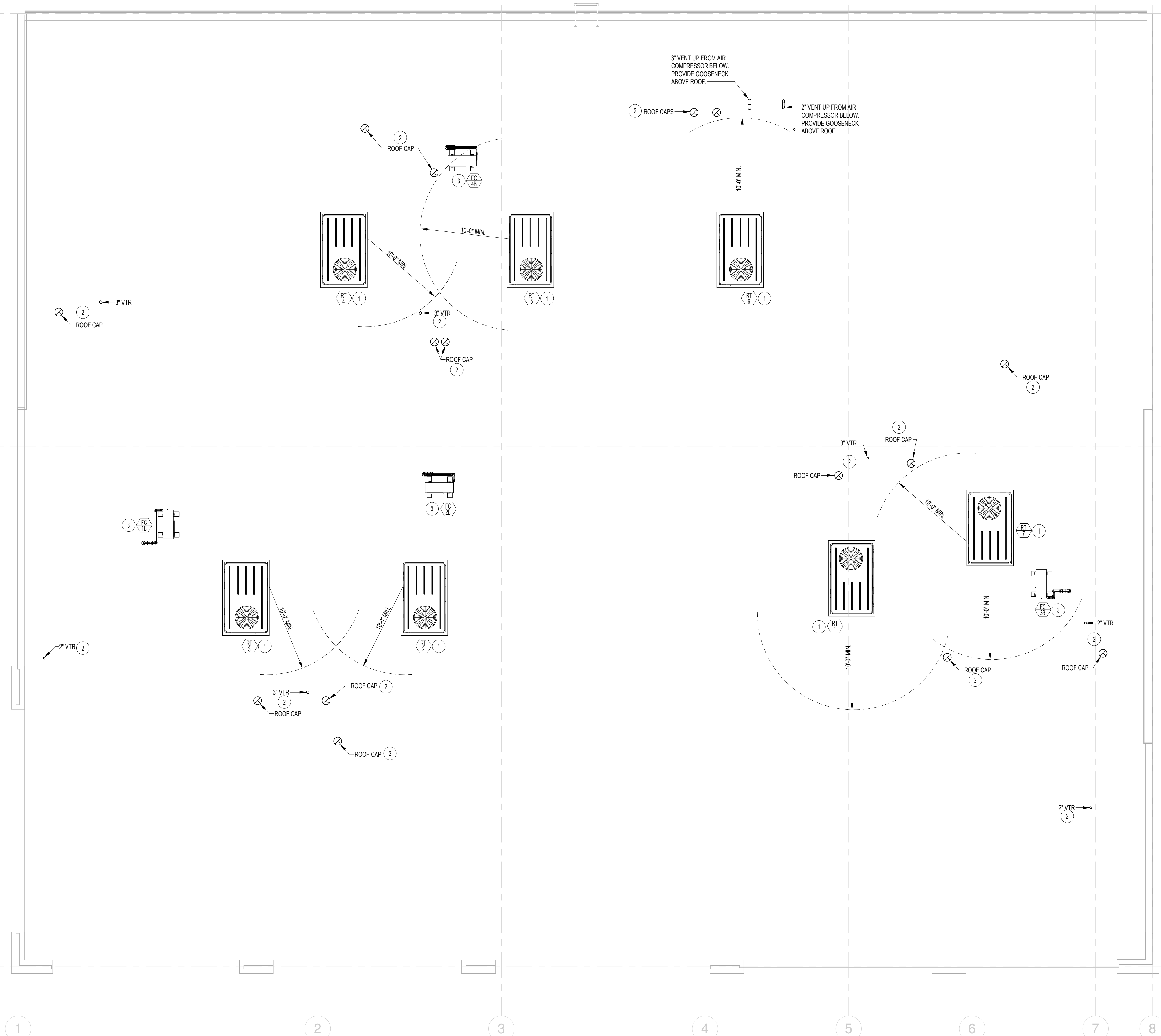


A

B

C



PLAN NOTES:

- 1 MOUNT ROOF TOP HVAC UNIT ON ROOF WITH ROOF CURB. DROP SUPPLY AND RETURN DUCTS DOWN THRU ROOF. REFER TO SHEET M1.1 FOR DUCTWORK BELOW ROOF. COORDINATE UNIT LOCATION WITH ROOF JOISTS AND DROP DUCTS BETWEEN JOISTS. REFER TO DETAIL EIM3.1 FOR TYPICAL ROOF CURB INSTALLATION.
- 2 COORDINATE LOCATION OF ROOF CAPS AND PLUMBING VENTS WITH ROOF MOUNTED EQUIPMENT. MAINTAIN A 10'-0" MINIMUM DISTANCE BETWEEN ANY EXHAUST OUTLET ON ROOF AND ANY EQUIPMENT AIR INTAKE AS REQUIRED BY CODE.
- 3 INSTALL MINI-SPLIT SYSTEM AS SCHEDULED WITH INDOOR AND OUTDOOR UNITS. MOUNT OUTDOOR UNIT ON ROOF DIRECTLY ABOVE INDOOR UNIT. RISE REFRIGERANT PIPING UP THRU ROOF WITH 4" CPVC GOOSENECK ROOF PENETRATION. REFER TO DETAIL HM3.1 FOR TYPICAL GOOSENECK ROOF PENETRATION.

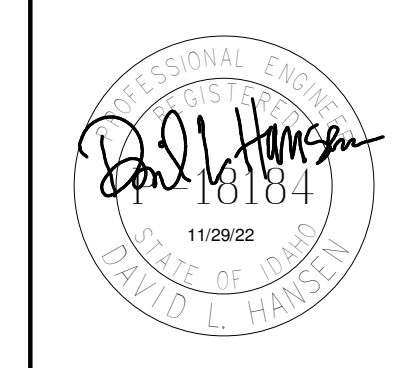
12/2/2022

DATE:

A NEW FACILITY FOR;
FAMILY HEALTH SERVICES
 SHOSHONE, IDAHO
MECHANICAL ROOF PLAN

Laughlin Ricks Architecture
 architecture/planning
 935 Shoshone Street North * Twin Falls, Idaho 83301
 (208) 736-8050 Fax: (208) 733-0950

1 MECHANICAL ROOF PLAN
 3/16" = 1'-0"



Engineered Systems Associates
 1395 EAST CENTER
 POCAHELLO, IDAHO 83201
 PHONE: (208) 233-0501
 FAX: (208) 233-0529
 EMAIL: esa@engsystems.com
 ESA JOB NUMBER: 22042

DATE: 12/2/2022

MLJ DLH
 Drawn Checked

M2.1